

## Installation of Arizona Alpha

*By A. K. Parker, Alabama Mu*

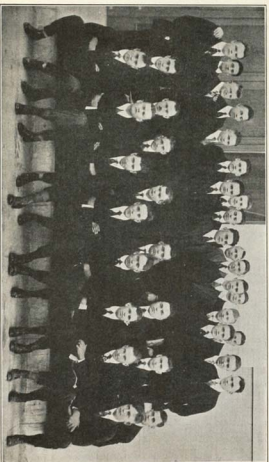
**T**HE installation of Sigma Pi Alpha, a University of Arizona "local," as Arizona Alpha Chapter of Sigma Alpha Epsilon Fraternity, March 1-3 inclusive, belongs to the record.

Over the doorway of a large bungalow on one of the prettiest residence streets of Tucson hangs a shingle bearing the letters "Σ A E." It is the domicile of the pioneer Σ A E chapter in the far southwest. It is also the symbol of Sigma Alpha Epsilon's preëmption of the field, for while the chapter as a unit of Σ A E has been in existence less than a month, it has been Σ A E in spirit since the organization of the local several years ago, and those years of waiting in neophytic outer darkness will always be included, in the minds of the charter members of Arizona Alpha, in the history of Σ A E in Arizona. They had the definite ideal from the start.

The installation ceremonies occurred on the afternoon of March 2, in a large hall used by fraternal organizations and, therefore, admirably suited to the purpose. The installation, however, was preceded on the evening of March 1 by a smoker at the Sigma Pi Alpha house in honor of Brother Levere, who had arrived that afternoon from El Paso. Brother Levere gave his well-known illustrated lecture before the neophytes in preparation for the ceremonies of the next day.

Among the Σ A Es in the University of Arizona student body and in the city, there was at first a disposition to give the neophytes a regular initiation, but when noses were counted discretion won over valor. Including the thirteen alumni members of Sigma Pi Alpha, who were present to be initiated with the installation of the chapter, there were thirty-four stalwarts. We were seven.

The installation officers were: Wm. C. Levere, E. A.; M. E. Gault, Missouri Beta, E. D. A.; Justin Barnard, New Hampshire Alpha, E. H.; J. Fred Cleaveland, Colorado Chi, E. C.; A. K. Parker, Alabama Mu, E. R.; L. L. Galland, Illinois Psi Omega, E. W.; Bros. Duane Bird, Michigan Iota-Beta, and D. C. Brooke, Arkansas Alpha, "props."



CHARTER MEMBERS OF ARIZONA ALPHA, UNIVERSITY OF ARIZONA, TUCSON

The ceremonies of the ritual, beginning with the appearance of the neophytes, who had remained at the chapter house until preparations were completed, then ensued, lasting several hours.

For the older members of  $\Sigma A E$ , the neophytes symbolized Youth, forever knocking at the door of  $\Sigma A E$ , whose hand they touched in the relay of fraternity that leads back to and still thrills to the handclasp of Noble Leslie DeVotie and his associate founders of Mother Mu.

After the installation ceremonies, pictures were taken of Arizona Alpha Chapter and of the chapter with the installing officers. The photographer made use of the last rays of the setting sun to accomplish this and the  $\Sigma A E$ s disbanded hurriedly in order to get ready for the installation banquet, which followed at six o'clock at the Hotel Santa Rita dining-room.

A feature of the decorations of the banquet hall which attracted attention was a large picture of the martyred president, William McKinley, whose name is revered throughout the jurisdiction of Sigma Alpha Epsilon. Violets were, of course, used in profusion and with pretty effect, while an attractive menu and place-card indicated each place.

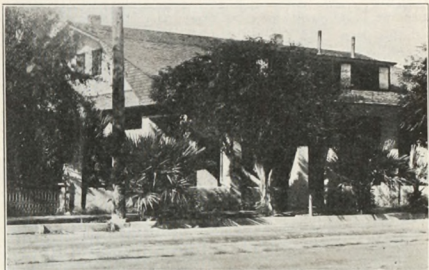
During the evening more than eighty telegrams of congratulation were received from members of the Fraternity and chapter officers throughout the country, and this warm welcome into the Fraternity was deeply appreciated by the members of the new chapter. It was an unexpected, spontaneous evidence that Sigma Alpha Epsilon everywhere knew of the big event in Arizona and was joyously glad about it. These telegrams but emphasized the splendid spirit of fraternity which pervaded the banquet atmosphere and made the evening one never to be forgotten.

The toastmaster was J. Preston Jones, an alumnus of Arizona Alpha Chapter, who is now assistant to Pres. R. B. von Klein-Smid of the University of Arizona.

The following was the program of responses: "The Greek World," Martin E. Galt, of Washington University, Missouri; "State of Arizona," Duane Bird, of Michigan University; "The University," Pres. R. B. von KleinSmid; "Sigma Pi Alpha," Albert H. Condon, of University of Arizona; "The Fraternity," Louis G. Golland, of Northwestern University; "Yesterday, Today, and

Tomorrow," Justin F. Barnard, University of Arizona; "Our Job," J. Fred Cleveland, of Colorado University; "Helping Hands," Walter M. Breger, of University of Arizona; "Sigma Alpha Epsilon," William C. Levere, of Northwestern University.

Now fully installed, Arizona Alpha made its bow the next evening, March 3, in the rôle of host, entertaining its friends among the faculty and student body of the university, and the city, with a dance at the Tucson Woman's Clubhouse. A beautiful decorative scheme had been wrought from the colors of the University of Arizona, red



Σ A E HOUSE, 745 N. STONE AVE., TUCSON, ARIZONA

and blue, and the colors of the fraternity, purple and gold, and by the profuse use of jonquils and violets. The dance was conceded to have been one of the most successful of the winter season. To the "sisterly" supervision of the young women friends of Arizona Alpha, belongs the credit for the artistic decoration of the ballroom.

Sigma Alpha Epsilon's position in this state will be fortified by the organization of the Tucson Alumni Association and possibly an association at Phoenix. At the smoker previously referred to, the members of Σ A E present and the alumni members of the "local" voted unanimously their desire to form an alumni association of Sigma Alpha Epsilon, and temporary organization was promptly



effected. The organization was made permanent following the installation the day following, with A. K. Parker, of Tucson (Alabama Mu), president; and J. Preston Jones of Tucson (Arizona Alpha), secretary-treasurer. This organization will apply for a charter at once.

Although Phoenix (the capital city) Σ A Es participated in the organization of the Tucson Alumni Association, it is likely that they will wish to form an association at Phoenix, in which case the two organizations would partition the state, forming two jurisdictions. There is no accurate census of the members of the Fraternity in Arizona, but there are believed to be enough to form two strong associations. The majority of them are in the mining industry, and the great activity in this industry just now prevented a larger attendance at the installation ceremonies.

The installation program went through without a hitch and with the departure of Brother Levere for the University of Nevada to install a chapter, the three days of fun and fellowship, beginning with his arrival, ended. Brother Levere completely won the members of Arizona Alpha, whose guest he was during his stay here. Fraternities, of course, do not advertise, but Billy Levere is irrepressible.

The initiates are—Alumni of Sigma Pi Alpha "local": Lyman B. LaTourette, Howard W. Estill, Francis B. Mack, Charles P. Beach, William Watson Pickrell, Allan C. Jones, Ralph Reynolds, Walter M. Brewer, J. Preston Jones, Verne LaTourette, Hal H. Grimshaw, George W. Seeley, W. Frank Wilkey.

Active members: Albert H. Condron, Orville McPherson, C. Zauer Leshner, Frank J. McSherry, Harry C. Turvey, John K. Moyer, Roland V. Downey, Noma T. Gilbert, Edward H. Estill, Carter C. Porter, James A. Tong, Temple F. Penrod, Ralph E. Weber, Harold L. Pierce, Thomas O. Marlar, Malcom Cummings, Charles E. Barkley, Alvin A. Iselin, Wm. M. Work, Rodger B. Braun, Julius R. Bush.

Arizona Alpha will meet you at Birmingham. Adios!